



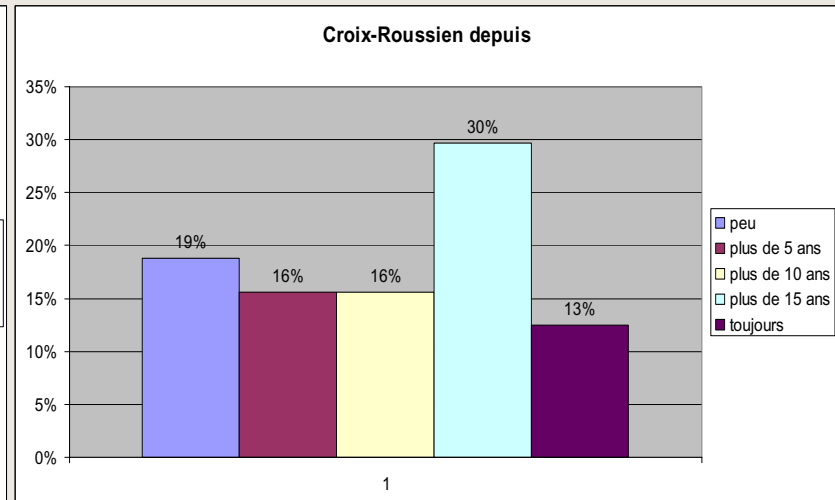
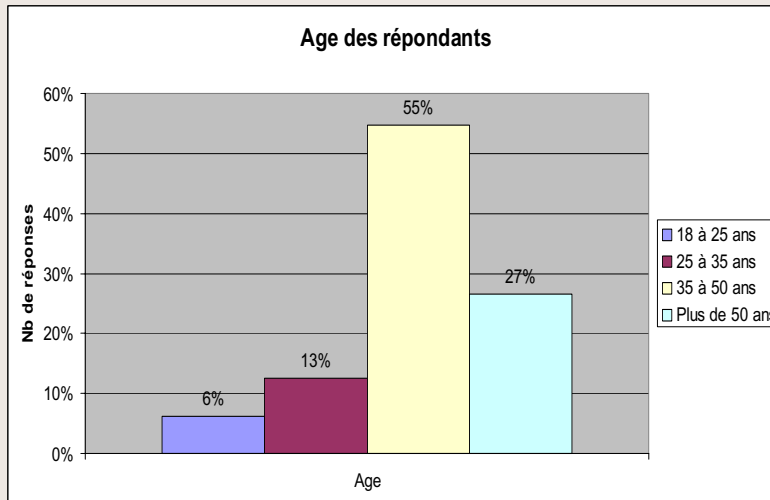
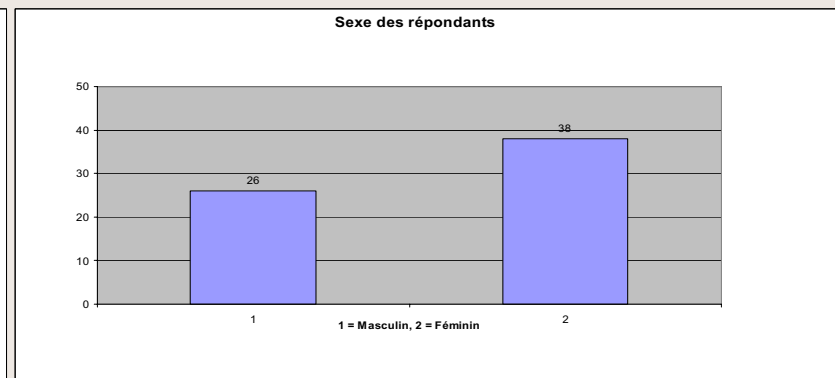
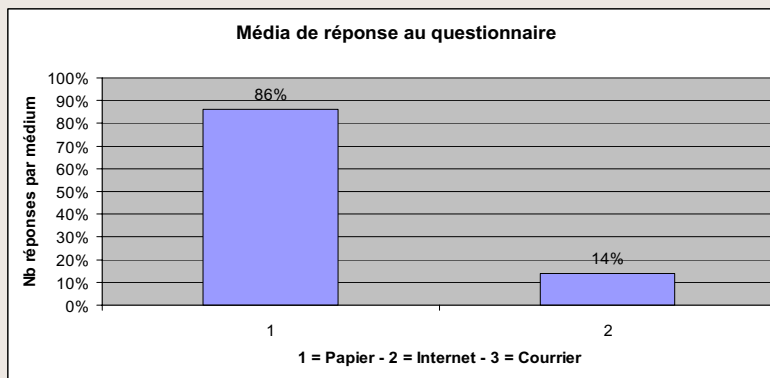
# CONSEIL DE QUARTIER LYON X ROUSSE EST

---

COMMISSION STATIONNEMENT & DEPLACEMENT  
RESULTATS DU QUESTIONNAIRE

AG Avril 2005

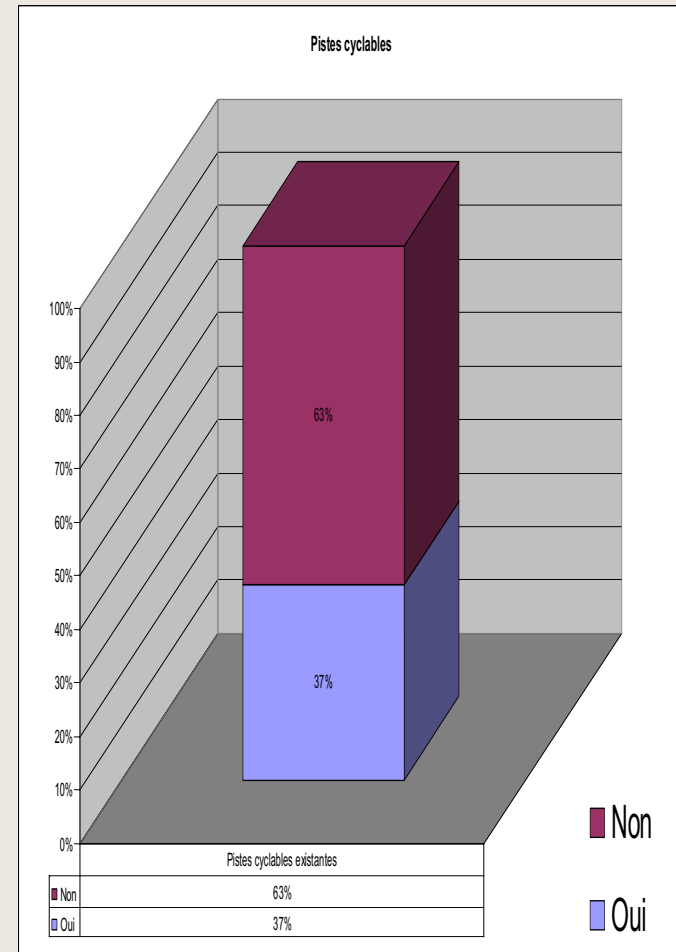
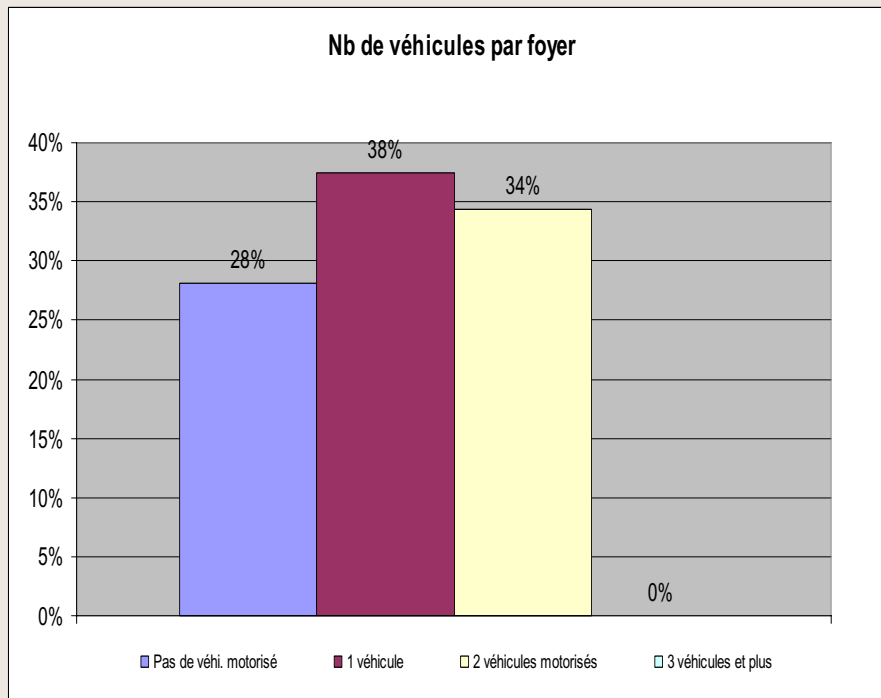
# Qui a répondu?



# Voiture(s), pistes cyclables?

De combien de véhicules dispose mon foyer?

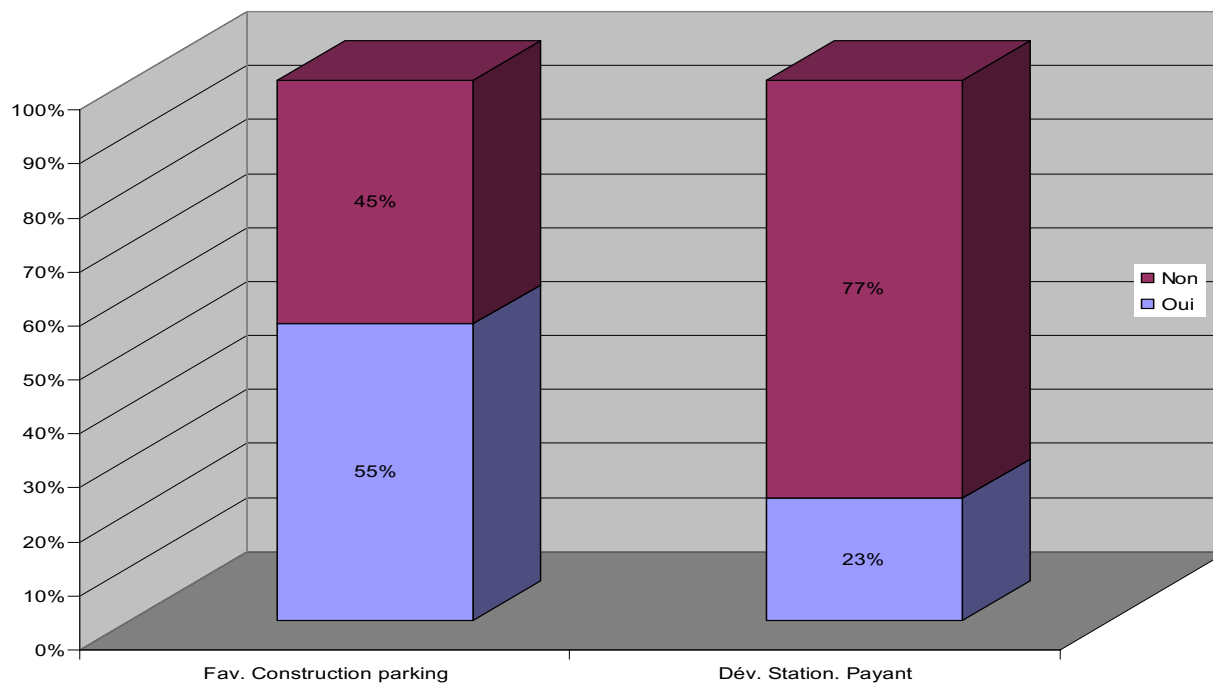
Ai-je connaissance de l'existence de pistes cyclables?



# Le stationnement...

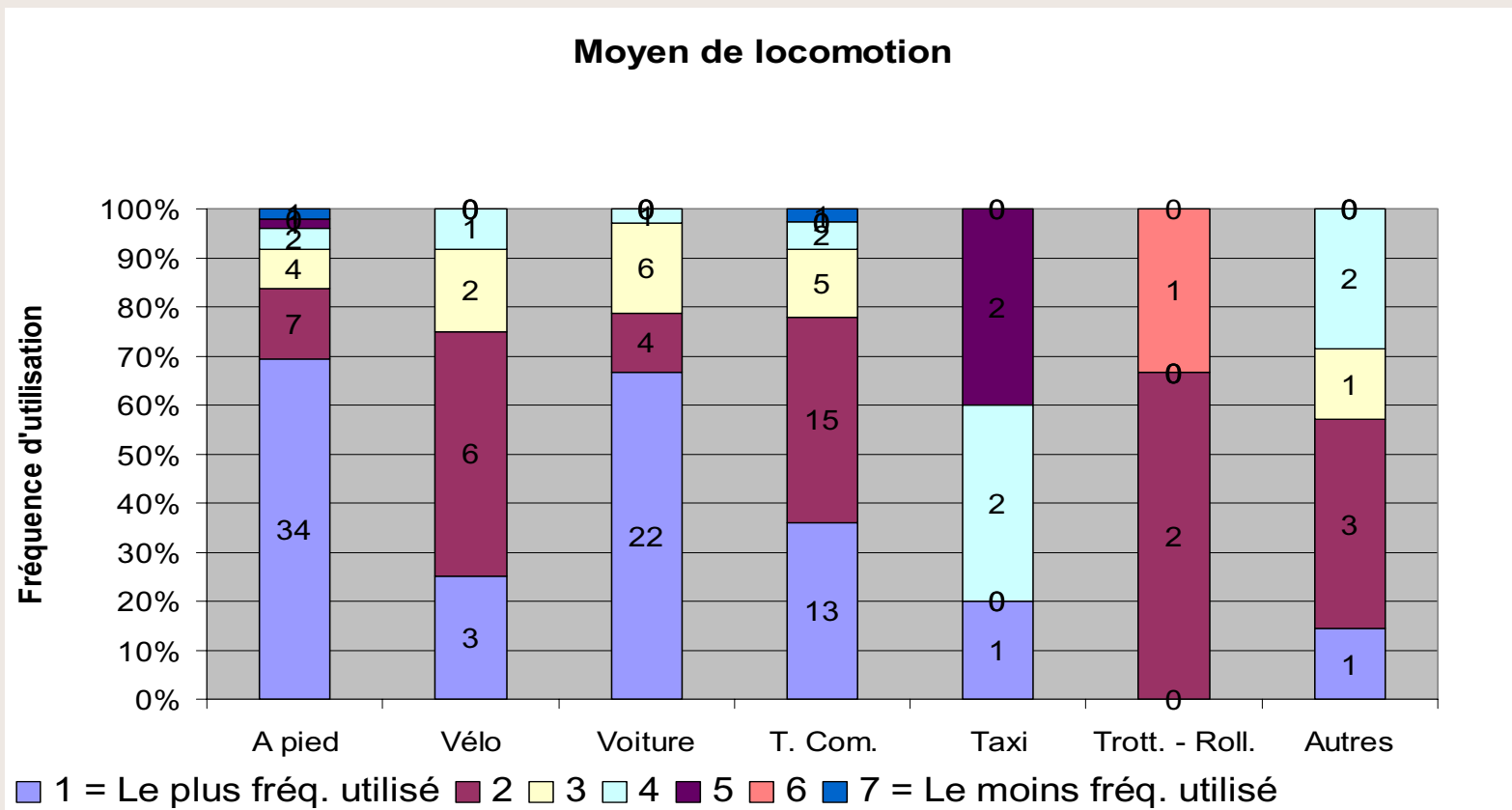
Je suis pour ou contre la construction de parkings souterrains?

Je suis pour ou contre le développement de stationnements payants?

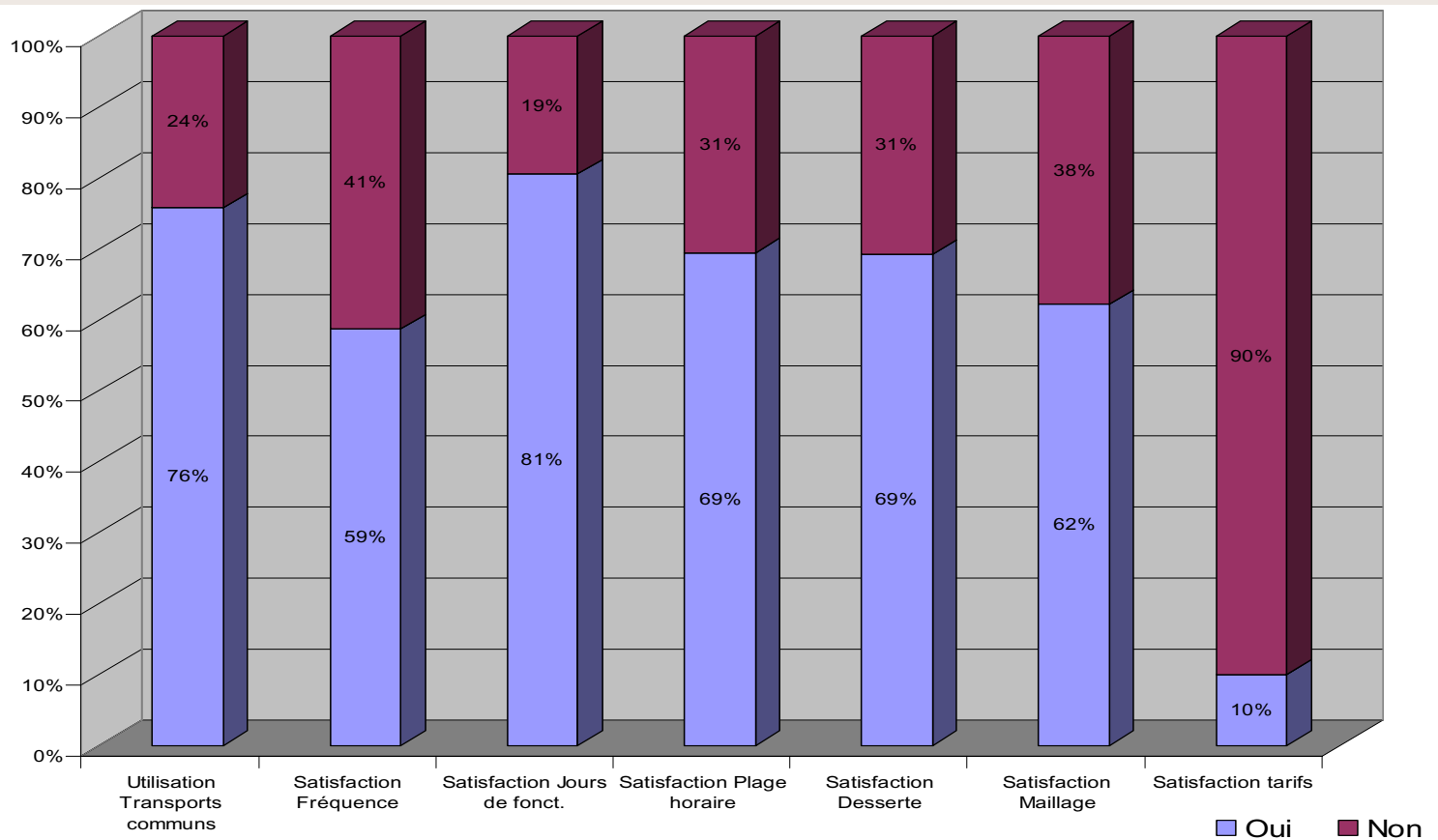


# Je me déplace...

Quels types de déplacements utilisez vous le plus fréquemment, classez les ?



# Les transports en commun...



A spiral-bound notebook with a brown cover and a light beige page. The spiral binding is on the left side. The word "Merci..." is written in the center of the page in a black serif font. A thin horizontal line is visible across the page, positioned above the text.

Merci...